

Judul : Fakultas Hukum Unmul Gelar Kegiatan Penyusunan RPS Berbasis Outcome-Based Education (OBE)

Kategori : Event

Publish : 03 Apr 2026

Link : <https://www.fh.unmul.ac.id/article/read/04-03-2026-fakultas-hukum-unmul-gelar-kegiatan-penyusunan-rps-berbasis-outcome-based-education-obe>



Fakultas Hukum Universitas Mulawarman (FH Unmul) menyelenggarakan kegiatan Penyusunan Rencana Pembelajaran Semester (RPS) Berbasis Outcome-Based Education (OBE) pada Jumat, 13 Februari 2026 di Aula Fakultas Hukum Universitas Mulawarman, Samarinda. Kegiatan ini diikuti oleh seluruh dosen Fakultas Hukum sebagai bagian dari upaya peningkatan kualitas pembelajaran dan penguatan implementasi kurikulum berbasis capaian pembelajaran.

Kegiatan ini menjadi langkah strategis dalam mendukung penerapan pendekatan Outcome- Based Education (OBE) di lingkungan FH Unmul. Pendekatan OBE menekankan pentingnya ketercapaian hasil belajar mahasiswa yang terukur melalui keselarasan antara Capaian Pembelajaran Lulusan (CPL), Capaian Pembelajaran Mata Kuliah (CPMK), hingga Sub- CPMK dalam proses perencanaan pembelajaran. Dengan demikian, proses pembelajaran tidak hanya berorientasi pada penyampaian materi, tetapi juga pada pencapaian kompetensi yang dibutuhkan oleh lulusan di dunia kerja.

Kegiatan dimulai pada pukul 08.30 WITA dengan registrasi peserta, kemudian dilanjutkan dengan pembukaan yang diawali dengan menyanyikan lagu Indonesia Raya serta sambutan dari Dekan Fakultas Hukum Universitas Mulawarman. Dalam sambutannya, pimpinan fakultas menekankan pentingnya penyusunan RPS yang selaras dengan prinsip OBE sebagai bagian dari upaya peningkatan mutu pembelajaran di perguruan tinggi.

Agenda utama kegiatan diisi dengan pemaparan materi mengenai penyusunan RPS berbasis OBE oleh narasumber dari Lembaga Penjaminan Mutu dan Pengembangan Pembelajaran (LPMPP) Universitas Mulawarman, yaitu Muhammad Azmi, S.Pd.,M.Pd. Dalam paparannya, beliau menjelaskan pentingnya memahami keterkaitan antara Capaian Pembelajaran Lulusan (CPL), Capaian Pembelajaran Mata Kuliah (CPMK), dan Sub-CPMK sebagai dasar dalam penyusunan Rencana Pembelajaran Semester (RPS) berbasis Outcome-Based Education (OBE). Ia menekankan bahwa CPL menjadi rujukan utama yang kemudian diturunkan ke dalam CPMK pada setiap mata kuliah, dan selanjutnya diuraikan kembali ke dalam Sub-CPMK sebagai capaian pembelajaran yang lebih spesifik dan terukur dalam setiap pertemuan pembelajaran.

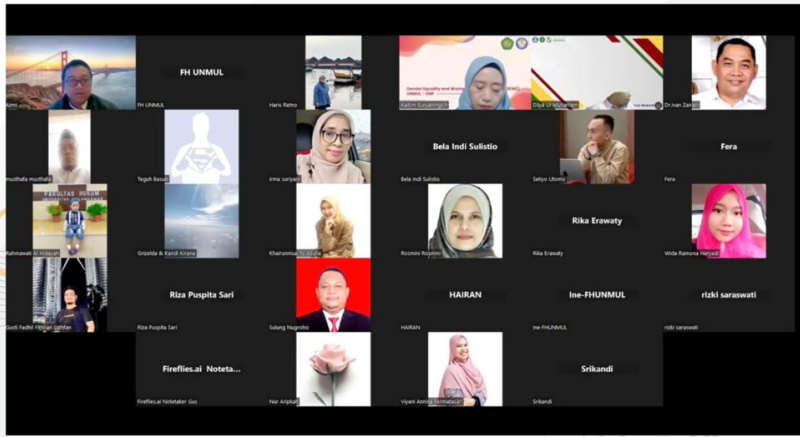
Pada sesi siang hari, kegiatan dilanjutkan dengan pemaparan RPS dari masing-masing minat studi oleh para dosen sebagai bagian dari proses diskusi dan penyelarasan dokumen pembelajaran. Melalui sesi ini, dosen dapat saling memberikan masukan dan memperkuat kualitas RPS yang akan digunakan dalam proses perkuliahan. Melalui kegiatan ini, Fakultas Hukum Universitas Mulawarman menargetkan tersusunnya RPS berbasis Outcome-Based Education (OBE) yang lebih sistematis, adaptif, dan selaras dengan perkembangan ilmu pengetahuan, teknologi, serta kebutuhan pemangku kepentingan. Dengan demikian implementasi RPS berbasis OBE, FH Unmul berharap proses pembelajaran dapat berlangsung lebih efektif, transparan, dan akuntabel, sekaligus mampu menghasilkan lulusan yang kompeten, unggul, dan memiliki daya saing.

Sebagai tindak lanjut dari kegiatan sebelumnya, Fakultas Hukum Universitas Mulawarman kembali melaksanakan kegiatan Pendampingan Penyusunan RPS Berbasis Outcome-Based Education (OBE) pada tanggal 2 April 2026 pukul 08.30 WITA secara daring melalui Zoom Meeting. Kegiatan ini diikuti oleh dosen Fakultas Hukum sebagai upaya memastikan implementasi OBE dapat diterapkan secara lebih teknis dan aplikatif dalam penyusunan RPS. Pada kegiatan pendampingan ini, peserta diberikan kesempatan untuk melakukan konsultasi langsung terkait penyusunan RPS yang telah disusun sebelumnya. Diskusi difokuskan pada penyelarasan antara CPL, CPMK, dan Sub-CPMK, serta penyusunan metode pembelajaran dan penilaian yang sesuai dengan prinsip OBE. Melalui forum ini, dosen dapat memperoleh umpan balik konstruktif guna menyempurnakan dokumen RPS agar lebih terukur dan sesuai dengan standar pembelajaran berbasis capaian. Kegiatan pendampingan ini diharapkan dapat memperkuat pemahaman dosen terhadap implementasi OBE secara komprehensif, sekaligus menghasilkan dokumen RPS dan siap diimplementasikan dalam proses pembelajaran di lingkungan Fakultas Hukum Universitas Mulawarman.

Download: Pedoman Evaluasi Pembelajaran Berbasis Outcome-Based Education Prodi Sarjana Hukum [Klik Disini](#).



Foto 1: Dokumentasi Kegiatan Penyusunan RPS Berbasis Outcome-Based Education (OBE)



WPS Office - Template Rekrutmen Pen...
 Halaman Muka | Slipikan | Tampilan Halaman | Formula | Data | Tampilan | Lihat | Alat | Perhitungan Premium | Smart ToolBox | A: WPS AI | Dikubur

Revisi: Sampel - B | Font: Arial | Font Size: 11 | Font Color: Black | Paragraph: Default | Orientation: Subjangan dan Terangkan | Performance: Konversi Format | Performance: Reformatasi Berapapun | Performance: Reformatasi Data

	SKS	CPL.1	CPL.2	CPL.3	CPL.4	CPL.5	CPL.6	CPL.7	CPL.8	CPL.9	Total Beban	Skor	Kategori
1	2	8%	33%	0%	42%	0%	0%	0%	17%	0%	100%	1	Sangat Rendah
2	0	0%	0%	0%	0%	0%	0%	0%	0%	0%	0%	2	Rendah
3	0	0%	0%	0%	0%	0%	0%	0%	0%	0%	0%	3	Moderate
4	0	0%	0%	0%	0%	0%	0%	0%	0%	0%	0%	4	Tinggi
5	0	0%	0%	0%	0%	0%	0%	0%	0%	0%	0%	5	Sangat Tinggi
6	0	0%	0%	0%	0%	0%	0%	0%	0%	0%	0%	0	
7	0	0%	0%	0%	0%	0%	0%	0%	0%	0%	0%	0	
8	0	0%	0%	0%	0%	0%	0%	0%	0%	0%	0%	0	
9	0	0%	0%	0%	0%	0%	0%	0%	0%	0%	0%	0	
10	0	0%	0%	0%	0%	0%	0%	0%	0%	0%	0%	0	
11	0	0%	0%	0%	0%	0%	0%	0%	0%	0%	0%	0	
12	0	0%	0%	0%	0%	0%	0%	0%	0%	0%	0%	0	
13	0	0%	0%	0%	0%	0%	0%	0%	0%	0%	0%	0	
14	0	0%	0%	0%	0%	0%	0%	0%	0%	0%	0%	0	
15	0	0%	0%	0%	0%	0%	0%	0%	0%	0%	0%	0	
16	0	0%	0%	0%	0%	0%	0%	0%	0%	0%	0%	0	
17	0	0%	0%	0%	0%	0%	0%	0%	0%	0%	0%	0	
18	0	0%	0%	0%	0%	0%	0%	0%	0%	0%	0%	0	
19	0	0%	0%	0%	0%	0%	0%	0%	0%	0%	0%	0	
20	0	0%	0%	0%	0%	0%	0%	0%	0%	0%	0%	0	
21	0	0%	0%	0%	0%	0%	0%	0%	0%	0%	0%	0	
22	0	0%	0%	0%	0%	0%	0%	0%	0%	0%	0%	0	
23	0	0%	0%	0%	0%	0%	0%	0%	0%	0%	0%	0	
24	0	0%	0%	0%	0%	0%	0%	0%	0%	0%	0%	0	
25	0	0%	0%	0%	0%	0%	0%	0%	0%	0%	0%	0	
26	0	0%	0%	0%	0%	0%	0%	0%	0%	0%	0%	0	
27	0	0%	0%	0%	0%	0%	0%	0%	0%	0%	0%	0	
28	0	0%	0%	0%	0%	0%	0%	0%	0%	0%	0%	0	
29	0	0%	0%	0%	0%	0%	0%	0%	0%	0%	0%	0	
30	0	0%	0%	0%	0%	0%	0%	0%	0%	0%	0%	0	
31	0	0%	0%	0%	0%	0%	0%	0%	0%	0%	0%	0	
32	0	0%	0%	0%	0%	0%	0%	0%	0%	0%	0%	0	
33	0	0%	0%	0%	0%	0%	0%	0%	0%	0%	0%	0	
34	0	0%	0%	0%	0%	0%	0%	0%	0%	0%	0%	0	
35	0	0%	0%	0%	0%	0%	0%	0%	0%	0%	0%	0	
36	0	0%	0%	0%	0%	0%	0%	0%	0%	0%	0%	0	
37	0	0%	0%	0%	0%	0%	0%	0%	0%	0%	0%	0	
38	0	0%	0%	0%	0%	0%	0%	0%	0%	0%	0%	0	
39	0	0%	0%	0%	0%	0%	0%	0%	0%	0%	0%	0	
40	0	0%	0%	0%	0%	0%	0%	0%	0%	0%	0%	0	
41	0	0%	0%	0%	0%	0%	0%	0%	0%	0%	0%	0	
42	0	0%	0%	0%	0%	0%	0%	0%	0%	0%	0%	0	
43	0	0%	0%	0%	0%	0%	0%	0%	0%	0%	0%	0	
44	0	0%	0%	0%	0%	0%	0%	0%	0%	0%	0%	0	
45	0	0%	0%	0%	0%	0%	0%	0%	0%	0%	0%	0	
46	0	0%	0%	0%	0%	0%	0%	0%	0%	0%	0%	0	
47	0	0%	0%	0%	0%	0%	0%	0%	0%	0%	0%	0	
48	0	0%	0%	0%	0%	0%	0%	0%	0%	0%	0%	0	
49	0	0%	0%	0%	0%	0%	0%	0%	0%	0%	0%	0	
50	0	0%	0%	0%	0%	0%	0%	0%	0%	0%	0%	0	
51	0	0%	0%	0%	0%	0%	0%	0%	0%	0%	0%	0	
52	0	0%	0%	0%	0%	0%	0%	0%	0%	0%	0%	0	
53	0	0%	0%	0%	0%	0%	0%	0%	0%	0%	0%	0	
54	0	0%	0%	0%	0%	0%	0%	0%	0%	0%	0%	0	
55	0	0%	0%	0%	0%	0%	0%	0%	0%	0%	0%	0	
56	0	0%	0%	0%	0%	0%	0%	0%	0%	0%	0%	0	
57	0	0%	0%	0%	0%	0%	0%	0%	0%	0%	0%	0	
58	0	0%	0%	0%	0%	0%	0%	0%	0%	0%	0%	0	
59	0	0%	0%	0%	0%	0%	0%	0%	0%	0%	0%	0	
60	0	0%	0%	0%	0%	0%	0%	0%	0%	0%	0%	0	
61	0	0%	0%	0%	0%	0%	0%	0%	0%	0%	0%	0	
62	0	0%	0%	0%	0%	0%	0%	0%	0%	0%	0%	0	
63	0	0%	0%	0%	0%	0%	0%	0%	0%	0%	0%	0	
64	0	0%	0%	0%	0%	0%	0%	0%	0%	0%	0%	0	
65	0	0%	0%	0%	0%	0%	0%	0%	0%	0%	0%	0	
66	0	0%	0%	0%	0%	0%	0%	0%	0%	0%	0%	0	
67	0	0%	0%	0%	0%	0%	0%	0%	0%	0%	0%	0	
68	0	0%	0%	0%	0%	0%	0%	0%	0%	0%	0%	0	
69	0	0%	0%	0%	0%	0%	0%	0%	0%	0%	0%	0	
70	0	0%	0%	0%	0%	0%	0%	0%	0%	0%	0%	0	
71	0	0%	0%	0%	0%	0%	0%	0%	0%	0%	0%	0	
72	0	0%	0%	0%	0%	0%	0%	0%	0%	0%	0%	0	
73	0	0%	0%	0%	0%	0%	0%	0%	0%	0%	0%	0	
74	0	0%	0%	0%	0%	0%	0%	0%	0%	0%	0%	0	
75	0	0%	0%	0%	0%	0%	0%	0%	0%	0%	0%	0	
76	0	0%	0%	0%	0%	0%	0%	0%	0%	0%	0%	0	
77	0	0%	0%	0%	0%	0%	0%	0%	0%	0%	0%	0	
78	0	0%	0%	0%	0%	0%	0%	0%	0%	0%	0%	0	
79	0	0%	0%	0%	0%	0%	0%	0%	0%	0%	0%	0	
80	0	0%	0%	0%	0%	0%	0%	0%	0%	0%	0%	0	
81	0	0%	0%	0%	0%	0%	0%	0%	0%	0%	0%	0	
82	0	0%	0%	0%	0%	0%	0%	0%	0%	0%	0%	0	
83	0	0%	0%	0%	0%	0%	0%	0%	0%	0%	0%	0	
84	0	0%	0%	0%	0%	0%	0%	0%	0%	0%	0%	0	
85	0	0%	0%	0%	0%	0%	0%	0%	0%	0%	0%	0	
86	0	0%	0%	0%	0%	0%	0%	0%	0%	0%	0%	0	
87	0	0%	0%	0%	0%	0%	0%	0%	0%	0%	0%	0	
88	0	0%	0%	0%	0%	0%	0%	0%	0%	0%	0%	0	
89	0	0%	0%	0%	0%	0%	0%	0%	0%	0%	0%	0	
90	0	0%	0%	0%	0%	0%	0%	0%	0%	0%	0%	0	
91	0	0%	0%	0%	0%	0%	0%	0%	0%	0%	0%	0	
92	0	0%	0%	0%	0%	0%	0%	0%	0%	0%	0%	0	
93	0	0%	0%	0%	0%	0%	0%	0%	0%	0%	0%	0	
94	0	0%	0%	0%	0%	0%	0%	0%	0%	0%	0%	0	
95	0	0%	0%	0%	0%	0%	0%	0%	0%	0%	0%	0	
96	0	0%	0%	0%	0%	0%	0%	0%	0%	0%	0%	0	
97	0	0%	0%	0%	0%	0%	0%	0%	0%	0%	0%	0	
98	0	0%	0%	0%	0%	0%	0%	0%	0%	0%	0%	0	
99	0	0%	0%	0%	0%	0%	0%	0%	0%	0%	0%	0	
100	0	0%	0%	0%	0%	0%	0%	0%	0%	0%	0%	0	
Jumlah	8%	33%	0%	42%	0%	0%	0%	17%	0%	100%			
Total Kebutuhan per CPL	8,33%	33,33%	0,00%	42,47%	0,00%	0,00%	0,00%	16,67%	0,00%	100,00%			

101 **Perencanaan**

102 Mata Kuliah: SKS CPL.1 CPL.2 CPL.3 CPL.4 CPL.5 CPL.6 CPL.7 CPL.8 CPL.9 Total Beban

103 Hukum Pangan 2 8% 33% 0% 42% 0% 0% 0% 17% 0% 100%

104 0 0% 0% 0% 0% 0% 0% 0% 0% 0% 0%

105 0 0% 0% 0% 0% 0% 0% 0% 0% 0% 0%

106 0 0% 0% 0% 0% 0% 0% 0% 0% 0% 0%

107 0 0% 0% 0% 0% 0% 0% 0% 0% 0% 0%

108 0 0% 0% 0% 0% 0% 0% 0% 0% 0% 0%

109 0 0% 0% 0% 0% 0% 0% 0% 0% 0% 0%

110 0 0% 0% 0% 0% 0% 0% 0% 0% 0% 0%

111 0 0% 0% 0% 0% 0% 0% 0% 0% 0% 0%

112 0 0% 0% 0% 0% 0% 0% 0% 0% 0% 0%

113 0 0% 0% 0% 0% 0% 0% 0% 0% 0% 0%

114 0 0% 0% 0% 0% 0% 0% 0% 0% 0% 0%

115 0 0% 0% 0% 0% 0% 0% 0% 0% 0% 0%

116 0 0% 0% 0% 0% 0% 0% 0% 0% 0% 0%

117 0 0% 0% 0% 0% 0% 0% 0% 0% 0% 0%

118 0 0% 0% 0% 0% 0% 0% 0% 0% 0% 0%

119 0 0% 0% 0% 0% 0% 0% 0% 0% 0% 0%

120 0 0% 0% 0% 0% 0% 0% 0% 0% 0% 0%

121 0 0% 0% 0% 0% 0% 0% 0% 0% 0% 0%

122 0 0% 0% 0% 0% 0% 0% 0% 0% 0% 0%

123 0 0% 0% 0% 0% 0% 0% 0% 0% 0% 0%

124 0 0% 0% 0% 0% 0% 0% 0% 0% 0% 0%

125 0 0% 0% 0% 0% 0% 0% 0% 0% 0% 0%

126 0 0% 0% 0% 0% 0% 0% 0% 0% 0% 0%

127 0 0% 0% 0% 0% 0% 0% 0% 0% 0% 0%

128 0 0% 0% 0% 0% 0% 0% 0% 0% 0% 0%

129 0 0% 0% 0% 0% 0% 0% 0% 0% 0% 0%

130 0 0% 0% 0% 0% 0% 0% 0% 0% 0% 0%

131 0 0% 0% 0% 0% 0% 0% 0% 0% 0% 0%

132 0 0% 0% 0% 0% 0% 0% 0% 0% 0% 0%

133 0 0% 0% 0% 0% 0% 0% 0% 0% 0% 0%

134 0 0% 0% 0% 0% 0% 0% 0% 0% 0% 0%

135 0 0% 0% 0% 0% 0% 0% 0% 0

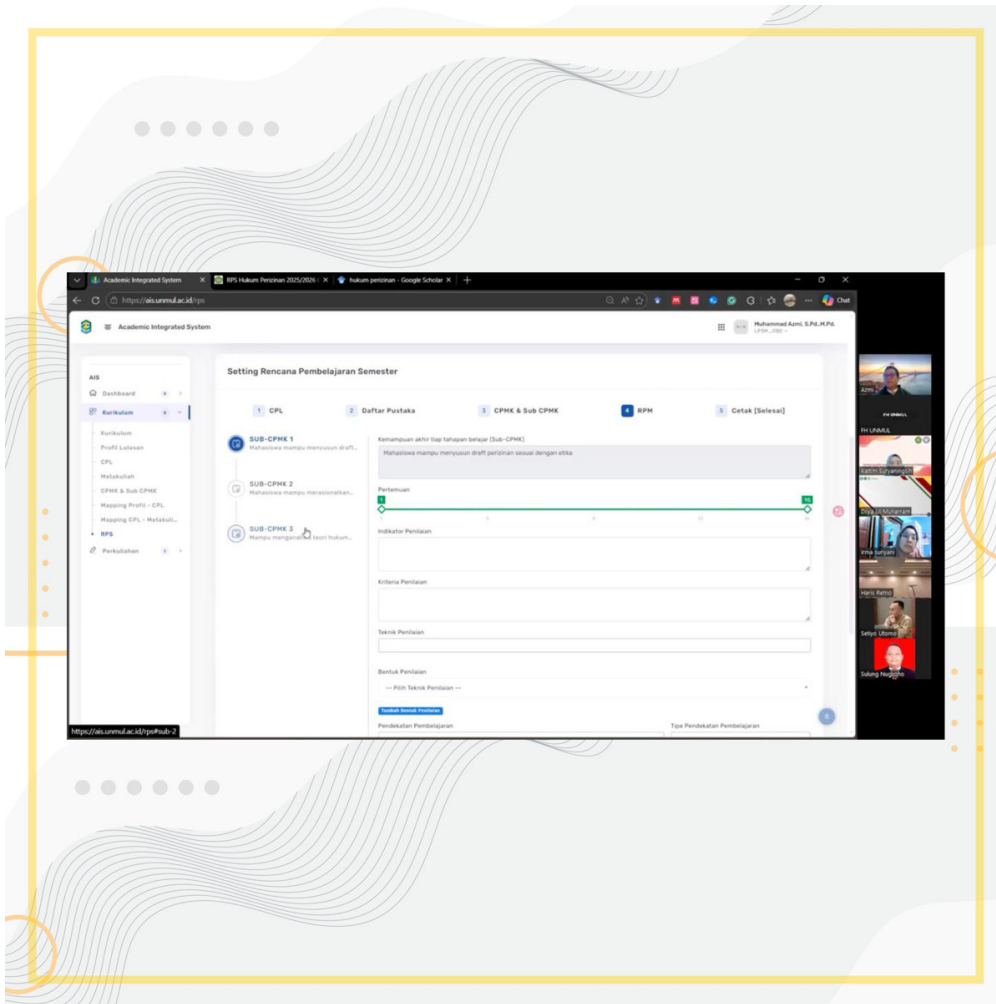


Foto 3: Dokumentasi Kegiatan Pendampingan Penyusunan RPS Berbasis Outcome-Based Education (OBE) via Zoom Meeting - 2